

MANUFACTURE OF THE PROPRIETARY PARTS SHOWN HERE WITHOUT WRITTEN CONSENT IS ABSOLUTELY PROHIBITED

THIS DRAWING EMBODIES A CONFIDENTIAL, PROPRIETARY DESIGN & ALL DESIGN, MANUFACTURING PRODUCTION, USE & SALE RIGHTS REGARDING SAME ARE EXPRESSLY RESERVED.

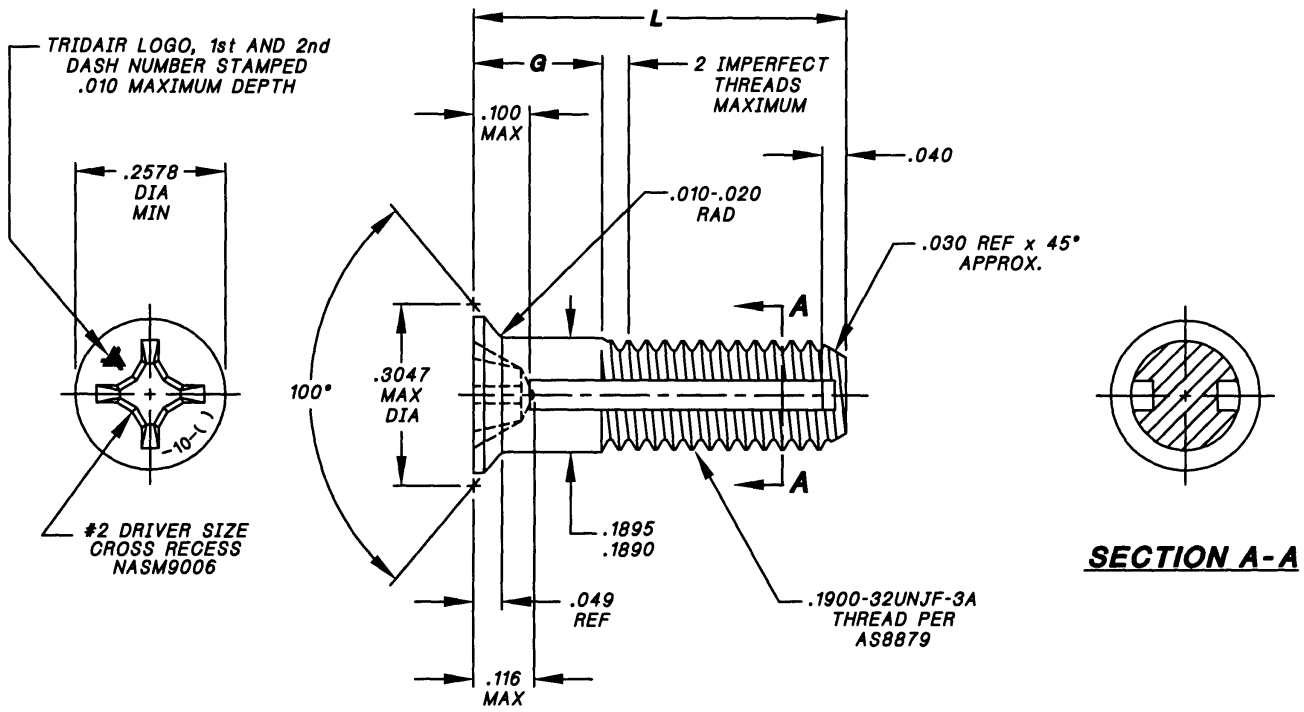


TABLE 1

SECOND DASH NUMBER	G	L
-0523	.160	.523
-0553	.190	.553
-0593	.230	.593
-0663	.300	.663
-0618	.255	.618
-0728	.365	.728

NOTES; UNLESS OTHERWISE SPECIFIED:

1. MATERIAL: A286 CRES PER AMS5731, AMS5732, AMS5734 OR AMS5737.
2. HEAT TREAT: 160,000 PSI MINIMUM ULTIMATE TENSILE STRENGTH.
3. FINISH: PASSIVATE PER AMS2700 OR AMS-QQ-P-35.
4. HEAD: 100° FLUSH HEAD PER NAS1581 EXCEPT FOR RECESS.
5. SCREW TO BE USED WITH CA2210-10R RETAINING RING TO CAPTIVATE TO PANEL.
6. PANEL PREPARATION: REFER TO CAL-STD-0260.
7. INSTALLATION: REFER TO TRIDAIR DRAWING NUMBER CA2210T-().
8. DESIGN LOADS (CALCULATED):
 - 8.1 TENSILE STRENGTH: 1,615 LBS MINIMUM.
 - 8.2 SINGLE SHEAR STRENGTH: 1,450 LBS MINIMUM.
9. RECOMMENDED SEATING TORQUE: 36-55 IN-LBS.
10. PART CALLOUT EXAMPLE:
 - 10.1 CA2279-10-0523

L = .523, G = .160

.1900-32 SIZE

BASIC PART NUMBER.

INTERIM DOCUMENT REVISION		
Rev.	Date	DAF #
C1	10/21/10	94301

INTERIM DOCUMENT REVISION		
Rev.	Date	DAF#
C2	10/8/2018	117431

APPROVED DATE 12 JAN 93 REV. LETTER AND DATE 6 0 OCT 00 DAF NUMBER DAF 75450	CURRENT DESIGN ACTIVITY: ARCONIC Arconic Fastening Systems TRIDAIR PRODUCTS 3000 W. LOMITA BLVD. TORRANCE, CA 90505	TITLE: SCREW, CAPTIVE, 100° HEAD, CRES, 160 KSI, .1900-32 SIZE UNLESS OTHERWISE SPECIFIED DIMENSIONS ARE IN INCHES & ANGLES = ° DECIMALS .XX = .02 .XXX = .010 ASME Y14.5M TOLERANCES:	CURRENT DESIGN ACTIVITY: CAGE CODE: 29372 SALES DRAWING NO. CA2279-10- () SHEET 1 OF 1
---	--	---	--

PROJECT NUMBER - 93-084B

S43744

SCANNED